

UNDERGROUND LABORATORIES

ANDRA (BURE – FRANCE) – MONT TERRI (SWITZERLAND)

Real-time monitoring network of scientific experimentation data

The French Agency for the Storage of Radioactive Waste (ANDRA), is building at Bure (Haute-Marne/Meuse) a 500 m deep laboratory for scientific experiments. ANDRA is also involved in the laboratory of Mont Terri (Switzerland).

Since 2001, SolData is in charge of the telemetric monitoring network of the scientific experimentation data obtained through numerous experiments, ranging from hydrological, geotechnical or thermal to geochemistry.

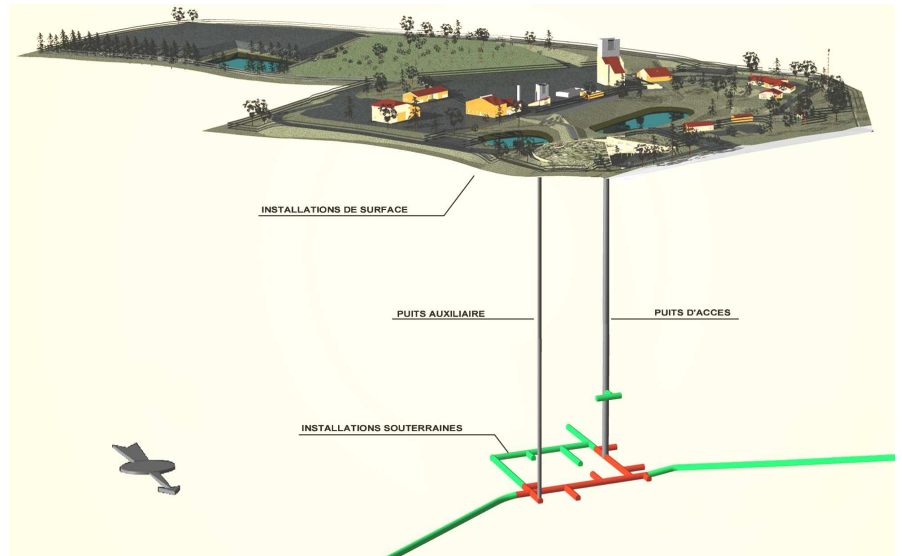
Thanks to its GEOSCOPE WEB software, SolData provides:

- ⇒ Access in real time, on a single system, to the latest laboratory data,
- ⇒ Acquisition, storage and processing of all the recorded information,
- ⇒ Data validation and presentation for all scientists

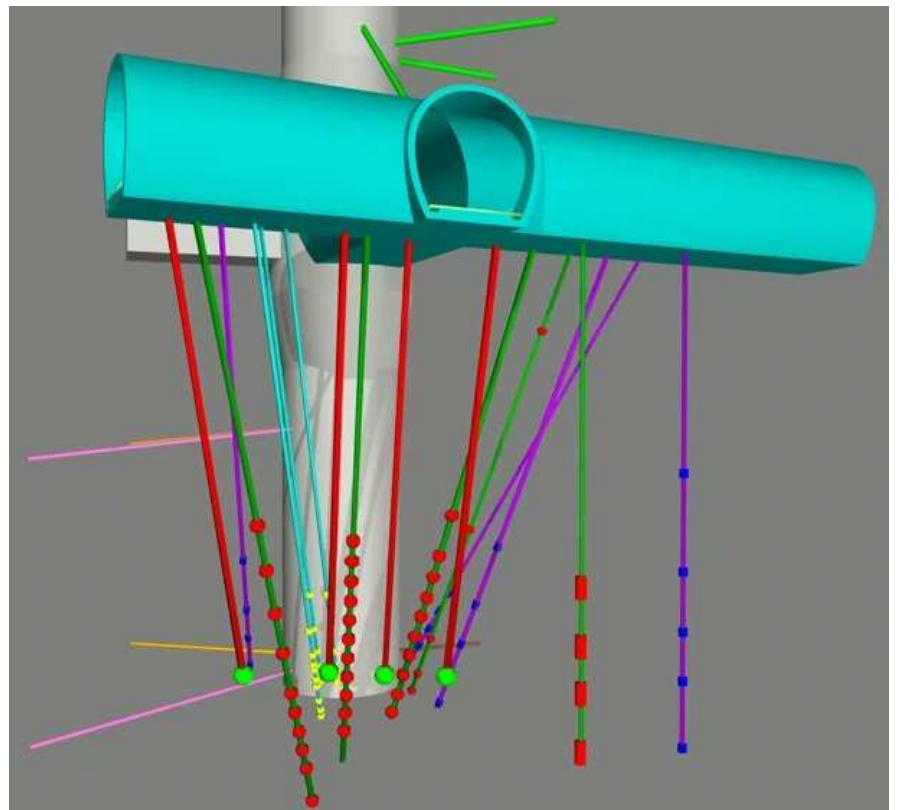
SolData is in charge of the maintenance of the whole instrumentation network.

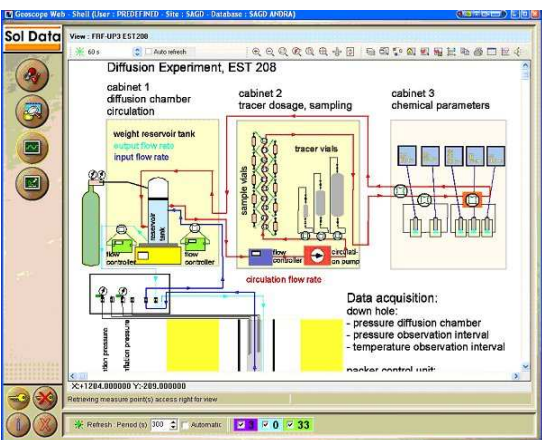
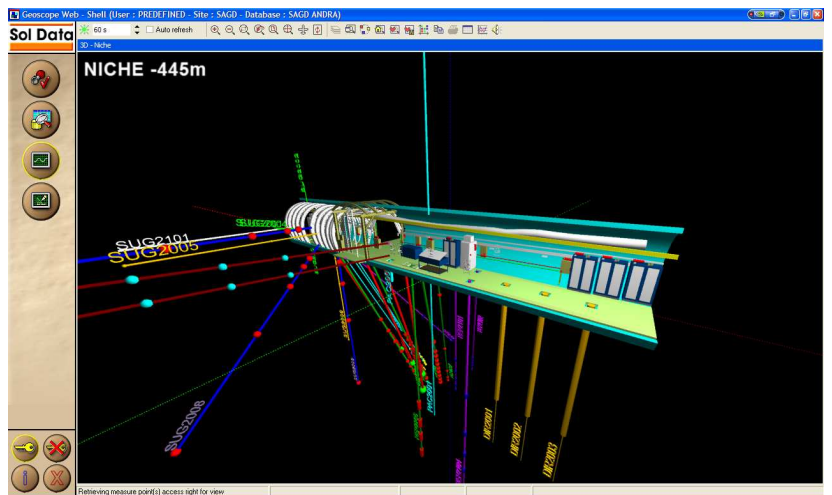
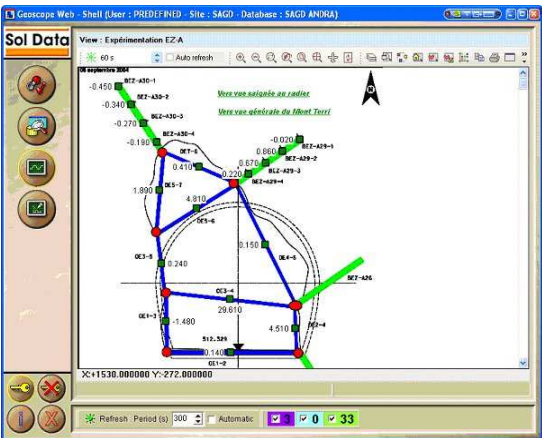
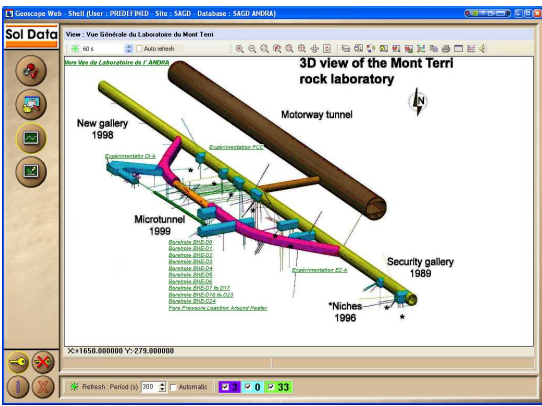
We carry out preventive actions:

- over 180,000 checks (sensors, dataloggers, optical fibre, firewalls, servers) per year
- many full servicing of scientific equipments like pumping units, Westbay deep completion system, etc.



Bure deep underground laboratory (level – 500m)





KEY FIGURES :

- 2 laboratories : Bure, Mont Terri
- Remote access for many scientists from abroad,
- 2 000 sensors
- 100 dataloggers,
- 80 computers
- 5 km of optical fibre

OWNER	ANDRA
DATE OF WORKS	SINCE 2001