

UNION STATION

WASHINGTON DC - USA

Real time monitoring of the station during excavation works nearby.



Union Station : Main Entrance



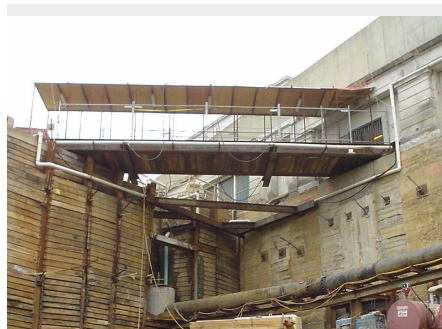
Union Station : Main Hall 1

In 2003, huge excavation works are done nearby the subway station UNION in the middle of WASHINGTON DC.

In order to prevent the deformation of this imposing structure, SolData Inc has installed a real-time instrumentation system.

Every ½ hour, 30 targets prisms, fixed on the building, are shot by CYCLOPS, a high accuracy motorized theodolite.

So, this sensitive site has been carried out during 6 months under safety conditions for its environment.



CLIENT :	ENGINEERING CONSULTING SERVICES, LTD (VIRGINIA)
CONTRACTOR :	TOM KINS
CONSULTANT :	SCHNABEL ENGINEERING
DATE OF WORKS :	MARCH 2003 – AUGUST 2003
WORKS DONE :	
	<ul style="list-style-type: none">• Installation of one CYCLOPS.• Installation of 30 targets.• Real time monitoring, alarms and reporting.